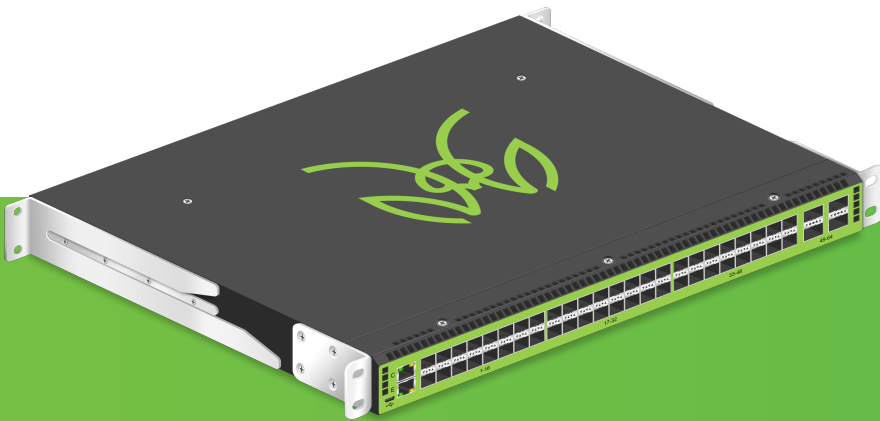
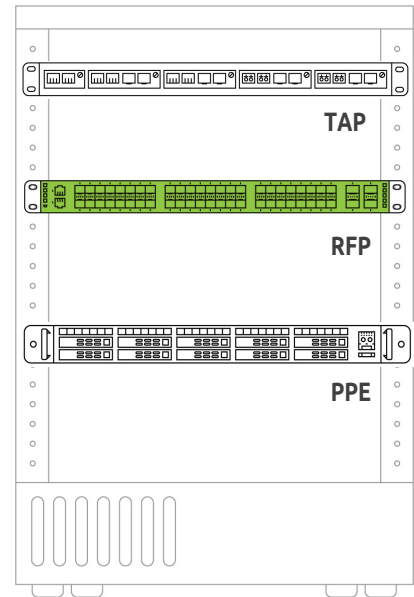


Overview

RFP | Reconfigurable Frame Processor

The MantisNet Reconfigurable Frame Processor (RFP-48) provides visibility into network traffic allowing filtering, aggregation, load balancing, and replication of traffic flows across multiple analytic tools. As network speeds continue to evolve, the RFP-48 will support your current 1/10 GIG monitoring as well as your migration towards 40 GIG and beyond. Protect your current investment in your existing monitoring tools by targeting traffic of interest and delivering it to these tools while reducing the investment and requirement for higher speed devices.



- Up to (48) 1/10 GIG SFP+ Ports and (4) 40 GIG QSFP+ Ports
- Filtering, aggregation, multi-cast, and regeneration
- Works with TAP, SPAN, or mirror ports
- Any port can be ingress (TAP) or egress (monitor)
- Redundant, high availability
- RESTful API, NetConf, CLI, GUI
- Any-to-Any, Many-to Many, Port Mapping
- No port licensing, all ports active
- Symmetric, Flow-Aware load balancing
- Plug & Play Software Defined Networking (SDN) monitoring architecture

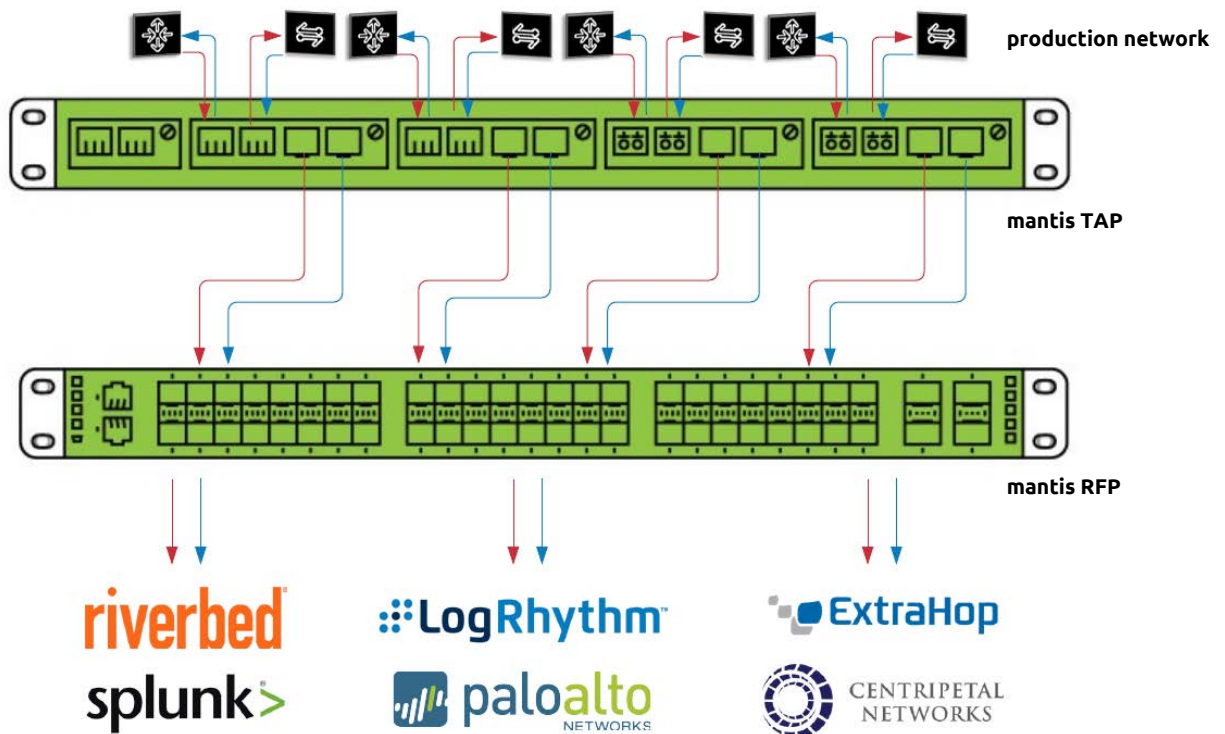
Applications

- Network monitoring
- Performance monitoring
- Application monitoring
- Cyber Security
- Network forensics recording
- CALEA
- Intrusion Detection and Prevention
- Mobile network monitoring: 3G, 4G (LTE)

Benefits

- Tool Sharing- Reduce costs by sharing expensive tools across departments and organizations
- Investment Protection- Use existing low speed tools for high speed circuits by filtering traffic of interest directed to existing tools

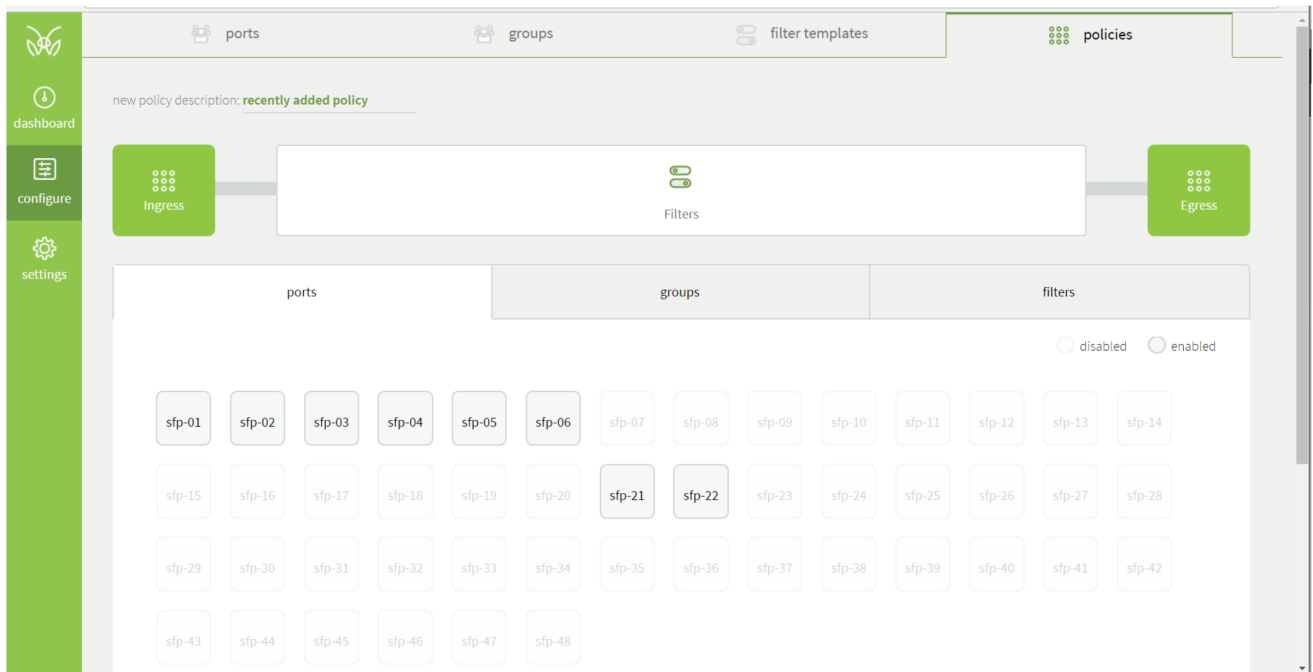
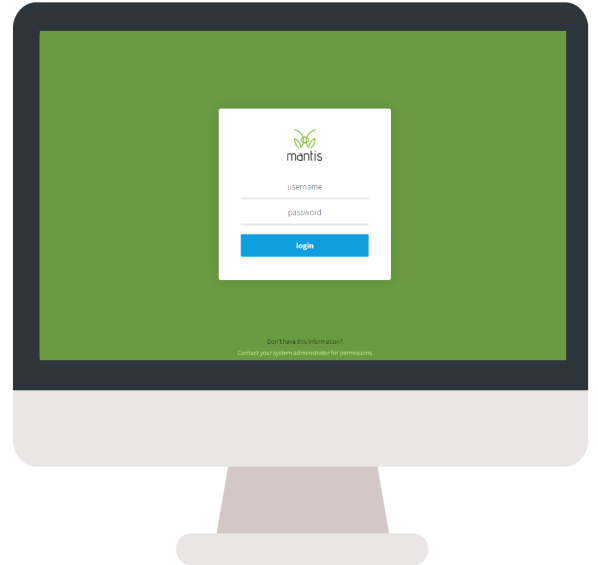
Monitoring Infrastructure



Graphical User Interface: MantisView

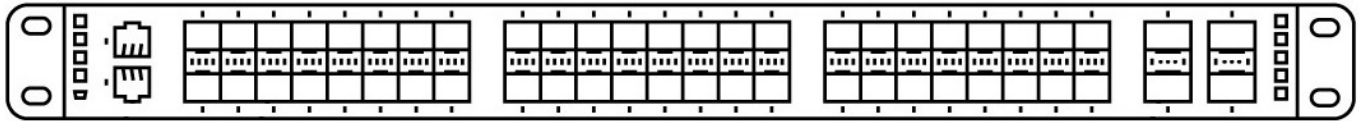
MantisView is a web-based, graphical user-interface that allows users to configure the RFP through a straight-forward "point and click" display.

Configure ports, group ports together, establish policies for data flows, filter out unwanted traffic-all of these actions can be accomplished within MantisView



Key Features

- Set filters easily with a few clicks of the mouse
- Aggregate multiple streams of network traffic
- Point and click design reduces troubleshooting time
- Web-based log-in allows for remote access, anywhere there is an internet connection
- 100% reconfigurable- create, save, and later edit RFP configurations with ease



RFP-48

Functional Specifications

	RFP-48
1 GIG Copper/RJ-45	n/a
1/10 GIG SFP	(48) 1 GbE (SFP) or 10 GbE (SFP+)
QSFP Ports	(4) 40 GbE (QSFP+)
Switch Fabric Capacity	1.28 Tbps
Management	RESTful API, CLI, NetConf, JSON-RPC, MantisView GUI
Console Ports	1 x RJ45 Serial
Management Port	10/100/1G BaseT

Physical, Environmental, and Power Specifications

	RFP-48
Power Supply Redundancy	Yes- Hot Swappable
Air Flow	Front to Back
Dimensions	1.75 (H) x 17.25 (L) x 18.75 (D)
Weight	16.94
Input Voltage / Frequency	100 - 240 VAC / 50 - 60 Hz
Operating Temperature	50 - 122 °F (10 - 50 °C)
Operating Relative Humidity	80% Maximum Relative Humidity
Max AC Consumption	230
Emissions	FCC, CE, VCCI-A, CCC, KCC, BSMI
Safety	UL, CE
RoHS	Yes